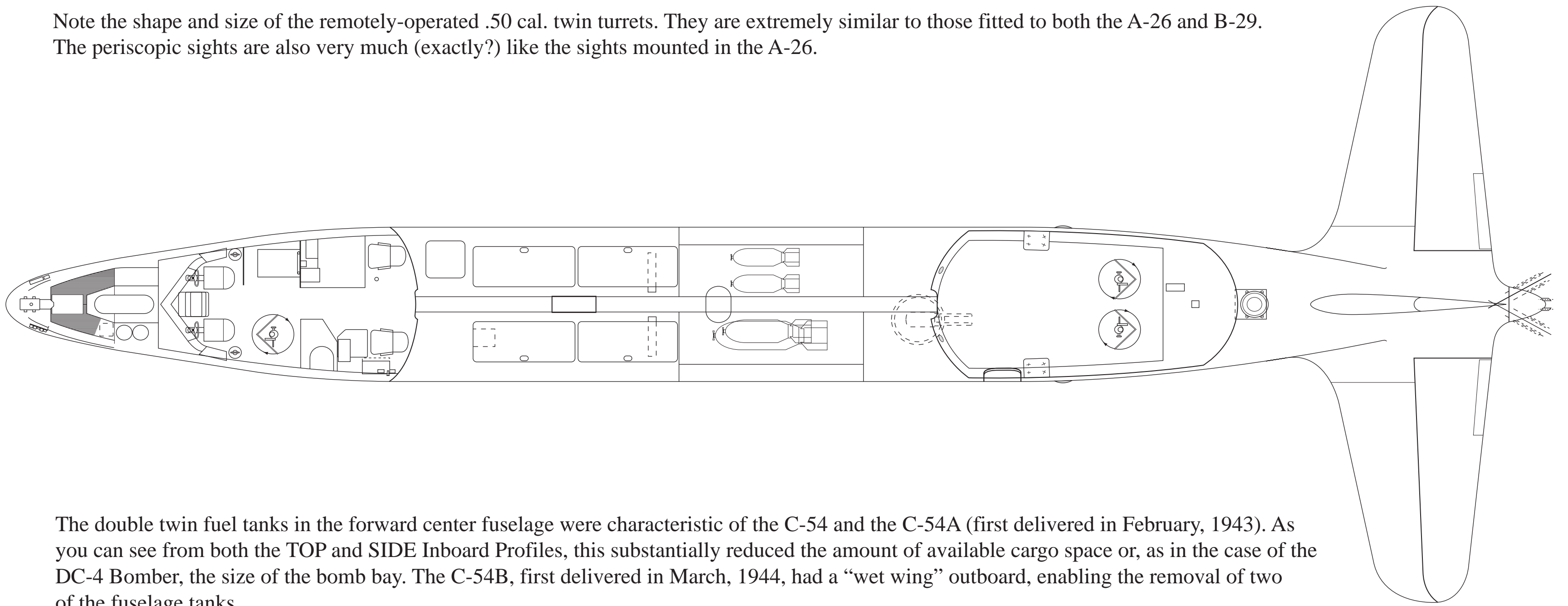
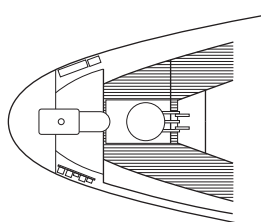
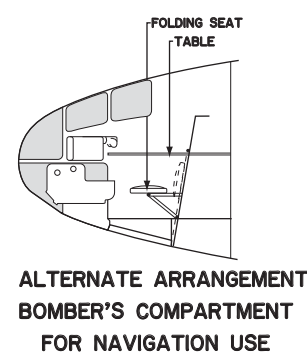
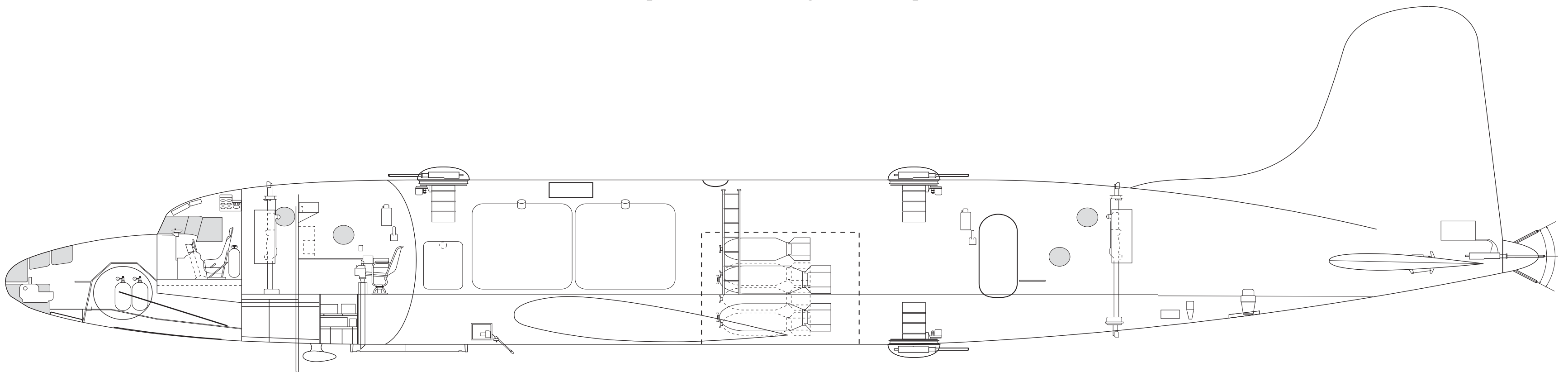


Note the shape and size of the remotely-operated .50 cal. twin turrets. They are extremely similar to those fitted to both the A-26 and B-29. The periscopic sights are also very much (exactly?) like the sights mounted in the A-26.

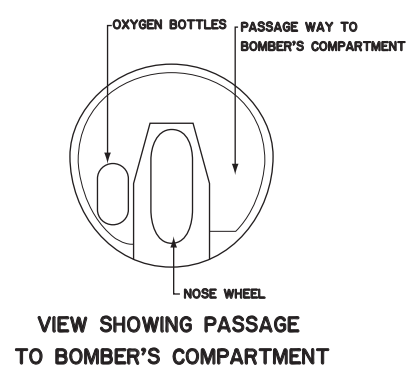


The double twin fuel tanks in the forward center fuselage were characteristic of the C-54 and the C-54A (first delivered in February, 1943). As you can see from both the TOP and SIDE Inboard Profiles, this substantially reduced the amount of available cargo space or, as in the case of the DC-4 Bomber, the size of the bomb bay. The C-54B, first delivered in March, 1944, had a “wet wing” outboard, enabling the removal of two of the fuselage tanks.

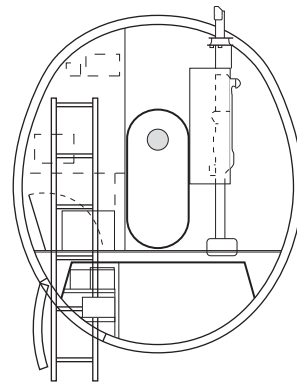
Also note the heavier dark lines around the front and rear crew compartments, showing where the pressurized sections would have been.



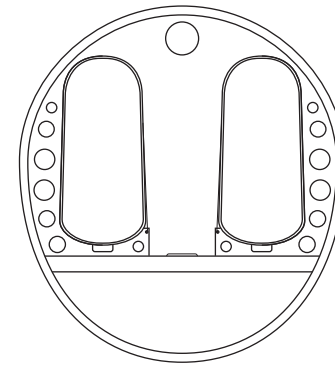
**VIEW SHOWING
BOMBER'S COMPARTMENT**



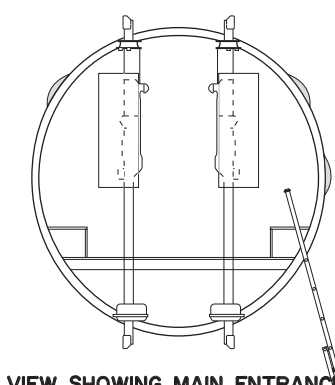
**VIEW SHOWING PASSAGE
TO BOMBER'S COMPARTMENT**



**FRONT GUN CONTROL
AND MAIN ENTRANCE**



FUSELAGE FUEL TANKS



**VIEW SHOWING MAIN ENTRANCE
AND DUAL FIRE CONTROL STATION**



**VIEW SHOWING
TAIL GUN CONE
DOORS OPEN**

